

AppManager™ for WebTrends Reporting Center™

Extends AppManager Suite to manage WebTrends Reporting Center

Overview

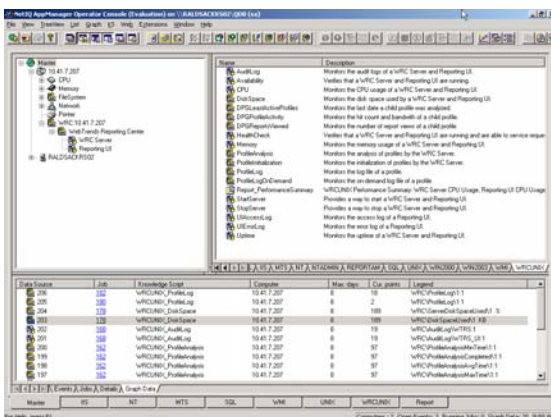
NetIQ's AppManager for WebTrends Reporting Center (AppManager for WRC) enhances NetIQ's AppManager Suite (AppManager) by providing support for WebTrends web analytics. This module extends your ability to manage the performance and availability of your enterprise web environment to include business-critical web analytics infrastructure.

If a profile fails to complete overnight, AppManager for WRC notifies you so you can take corrective action. You can also monitor the long-term load of the analytics infrastructure for planning, analysis and reporting.

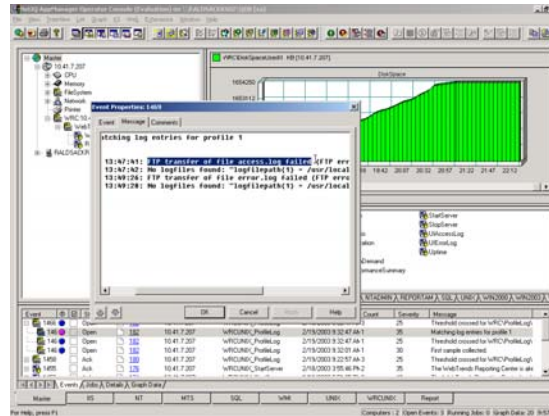
Solutions for Today

As a flagship product in NetIQ's WebTrends portfolio, WebTrends Reporting Center (WRC) is the leading web analytics tool that allows organizations to understand the business efficiency of their web sites and web-based applications. Managing the reliability of WRC is just as vital as managing J2EE™ application servers or Internet Information Server (IIS). AppManager for WRC is one component of AppManager, the industry's leading solution for managing, diagnosing and analyzing the performance and availability of Windows- and UNIX-based systems, applications and server infrastructures.

When used with other AppManager modules for web-based infrastructures, this module provides one central, easy-to-use console that automatically pinpoints, correlates and corrects performance and availability problems—not only with WRC itself, but also with the web servers, directories and application servers that comprise your entire web infrastructure.



AppManager's easy-to-use console shows performance and availability information for WebTrends Reporting Center.



AppManager for WRC delivers automatic notification about problems retrieving log files.

Key Benefits

Automates systems management - Offers out-of-the-box management for WRC Servers with the HealthCheck Knowledge Script, minimizing system downtime and freeing you from daily firefighting. AppManager for WRC takes systems management beyond the manual stand-alone scripting approach, initiating automated responses or corrective actions based on event severity.

Ensures availability of analytics data - Alerts you when one or more of the required log files cannot be found for analysis by monitoring each WRC profile. As with all AppManager alerts, this module can notify you by pager or e-mail and automatically take specific actions.

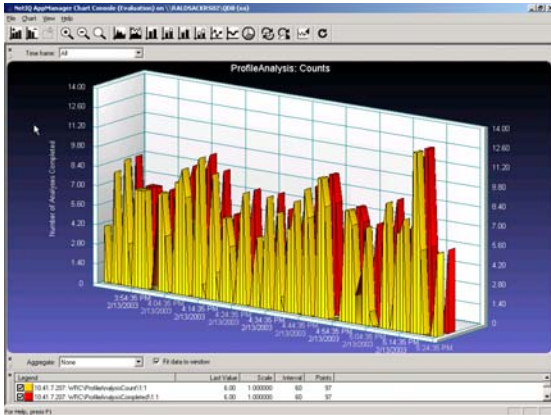
Collects real-time data - Evaluates threshold alerts and takes action to correct performance problems. Unlike other applications that rely solely on historical data gathered from access and error logs, this module also provides an accurate picture of WRC performance without requiring intrusive instrumentation.

Uses unique technology - Allows you to dynamically configure measurement values so a single script can do the job of many by utilizing unique Knowledge Scripting technology. For example, a single script can be configured through the use of a pop-up window with editable values to manage one profile for specific errors and another for overall completion. This reduces the number of scripts needed and allows an operations user with little web analytics knowledge to easily apply management conventions to WRC Servers.



MANAGE

AppManager™ for WebTrends Reporting Center™ (cont.)



AppManager for WRC allows you to graph any data streams, such as this comparison of how many profiles attempted and completed.

Technical Features

AppManager for WRC provides comprehensive management. The knowledge script set covers all major aspects, including:

- WRC Server and Reporting UI status and performance
- Error and audit logs
- Master domain profiles and individual profiles
- Reports viewed

Some examples of typical Knowledge Scripts and their detailed function include:

- **HealthCheck** verifies a WRC Server and its associated WRC Reporting UI are running, can respond to requests and can accept connections from clients.
- **DiskSpace** returns statistics on the storage used in the WRC partition including, optionally, GeoTrends. AppManager for WRC can alarm on a specific threshold or percentage of space used in order to stay ahead of storage problems.
- **AuditLog** tracks new entries in the WRC Reporting audit log, looking for common errors, as well as user-specified search strings, using regular expressions.
- **ProfileInitialization** tracks the successful initialization of a profile and alarms on initialization failures, with thresholds for the amount of time required to complete the initialization operation.

System Requirements

Operating Requirements

- Solaris v2.6, v2.7 (Solaris 7) or v2.8 (Solaris 8)
- Red Hat Linux v7.1 and v7.2

Supported Environments

Software:

- WebTrends Reporting Center v5.0, v6.0
- AppManager v5.0.1 or later

Contacts

Worldwide Headquarters

NetIQ Corporation
3553 North First Street • San Jose, CA 95134
713.548.1700
713.548.1771 fax
888.323.6768 sales
info@netiq.com
www.netiq.com

NetIQ Partner Benelux Albion Network Technologies BV

Postbus 1066
2280 CB Rijswijk
tel: +31 (0)70 - 390 6182
fax: +31 (0)70 - 307 7558

Bieremalaan 135
2497 AX Den Haag
www.albion.nl
netiq@albion.nl



WEBTRENDS

AppManager Suite, AppManager for WebTrends Reporting Center, WebTrends, the WebTrends logo, NetIQ and the NetIQ logo are trademarks or registered trademarks of NetIQ Corporation or its subsidiaries in the United States and other jurisdictions. All other company and product names may be trademarks or registered trademarks of their respective companies.

